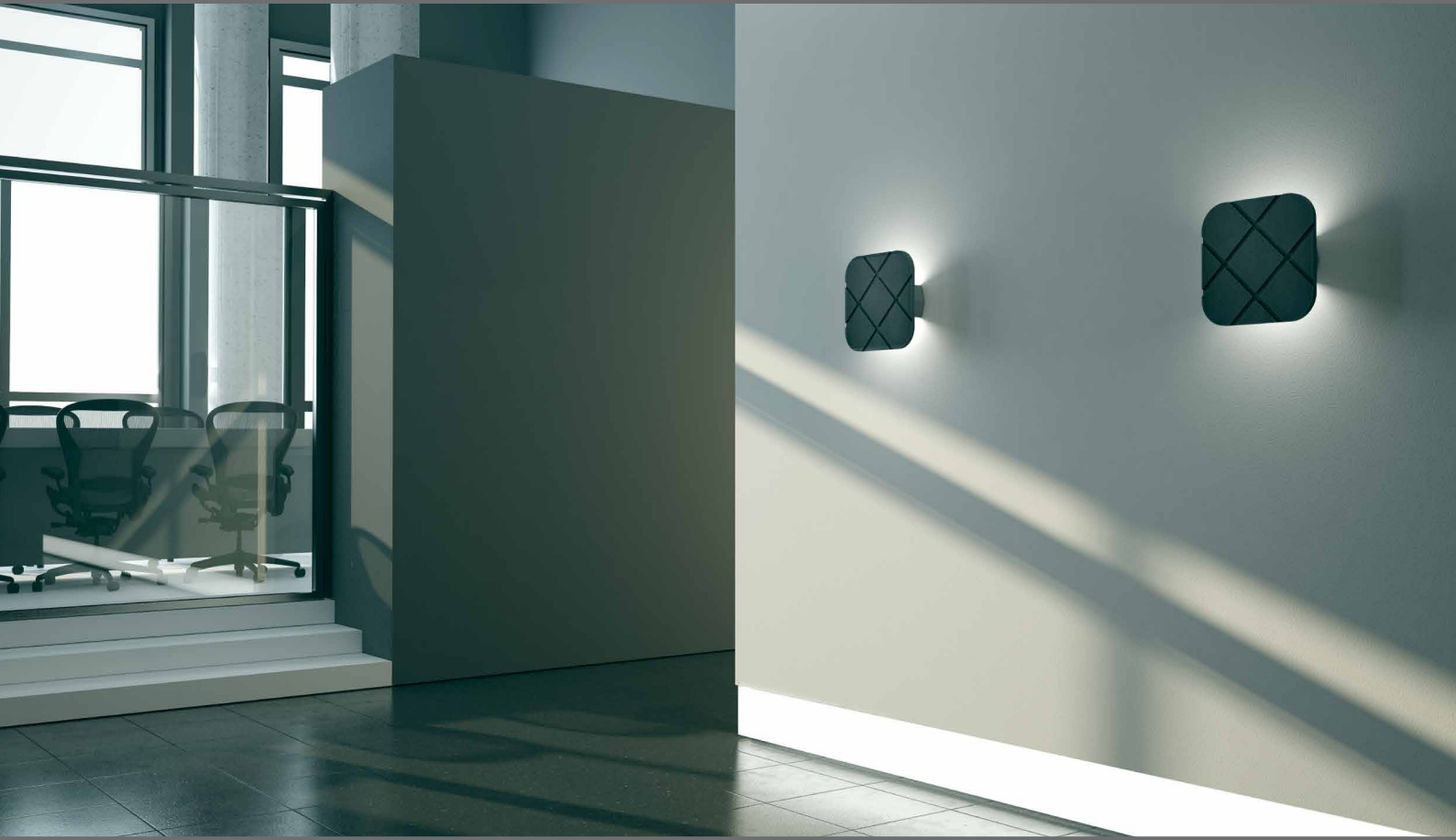




QUADRATA (G,L,X,N) concrete wall light



Properties

This product is made of concrete. Valentino Marengo in 2015.

Concrete is an extremely durable material, hence can be widely used in many applications. Concrete however, can stain or scratch or break if not used with care. It behaves like marble, ceramic or stone.

The raw material that we use is a unique reinforced mixture of cement, additives enhancers and special aggregates.

Aftercare

Always use soft sponges.

We recommend, not to rub the surface with sharp objects like wire, metal tools or hard sponges.



Dimensions/Weight

30 x 30 cm

Depth: 9 cm

3,5kg

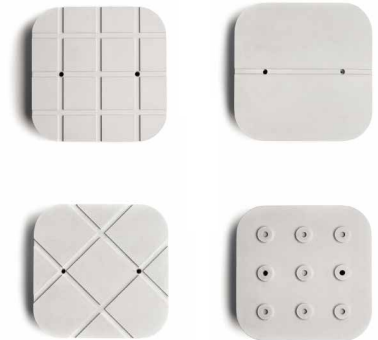
Quadrata wall lamp comes in 2 parts.

The cement part and the steel part which consists of a rosette and the 2 sockets E14.

Those 2 parts are mounted separately at the wall.

Actually the cement part, placed over the rosette and covers the light bulbs.

Available in 4 different patterns. (G , L , X , N)



Socket/Light Bulb

Type of socket : E14 X 2

Recommended light bulb: max watt (W) 40(x2) eco

Light bulbs not included

Input (V):110-230

Energy Class

from D to A++

Packaging

36x36x24cm

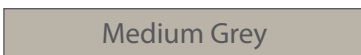
4,5kg

RECYCLED CARDBOARD 

Colors sort by category

Colored in its mass with pigments

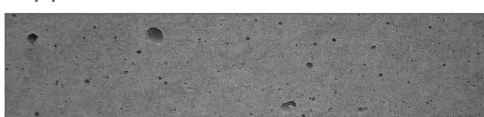
•Grey



•Basic

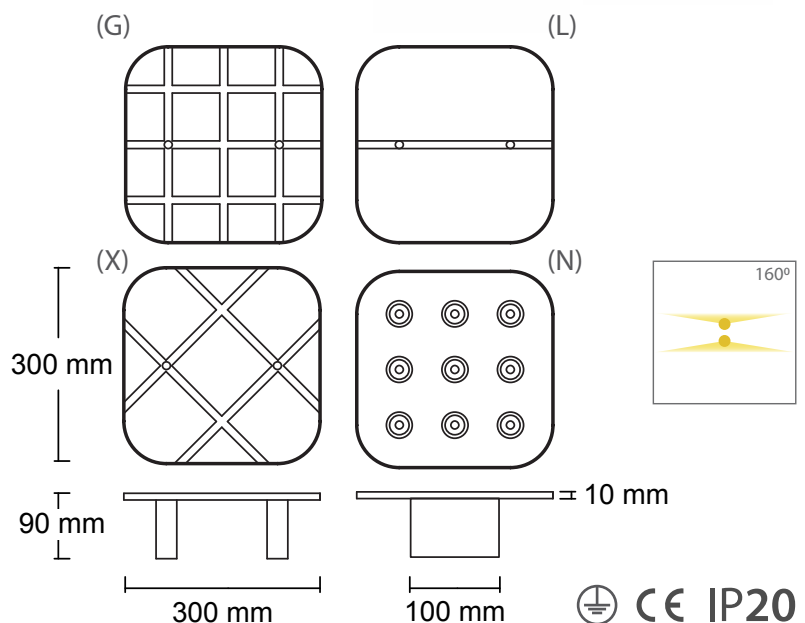


•Appearance



Every piece may appears with color tone variants at its surface, as also between the pieces or the sample. Concrete surface displays several air holes.

This is a natural characteristic of concrete.



 **CE IP20**

All rights reserved."Urbi et Orbi" brand and logos are registered trademarks. The industrial models of the product, the designation and the product photos are protected by the applicable copyright laws.

Urbi et Orbi reserves the right, in order to improve the capacities of the products, to make modifications to them, as if reference the raw materials, dimensions, weight, qualities or features, without prior notice.